

Behind the kettle

May 2024

Monthly update on life at Glasgow Life

Issue #18

**Need a form?
Looking for a
policy?**



**Go to our intranet
and colleague
information pages!**

glasgowlife.org.uk/about-us/colleague-information

Glasgowlife

Infrastructure Support team commitments

As part of our 2023 Colleague Feedback Survey, colleagues in Infrastructure Support committed to sharing knowledge and learning opportunities across our Facilities Management, Health and Safety, and Special Project teams.



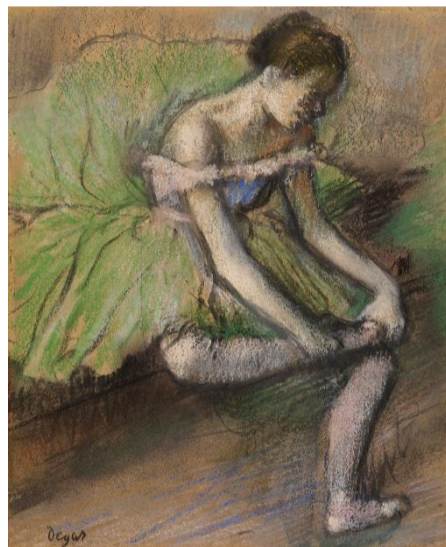
The team spent a day learning about traditional building maintenance at the Scottish Lime Centre and the lessons have already been applied across projects in GoMA, Provand's Lordship and Kelvingrove. They also attended a sustainable construction course, which has helped identify improvements and efficiencies at the new Baillieston Community Hub. Look out for more survey commitment updates from teams across Glasgow Life in future editions of Behind the Kettle and on our intranet.

Keep up to date with Glasgow Life online

Taking on board colleague feedback, we're reducing the number of internal comms emails we're sending.

Instead, the Colleague Information section of our website (for those without a work laptop/PC) and our intranet (for those with a work laptop/PC) should be your go-to resources for our latest news and updates.

The Colleague Information section of our website is available on your personal phone/laptop at glasgowlife.org.uk/about-us/colleague-information.



Discovering Degas at Burrell – colleague entry £5

A new exhibition of works by one of the world's most celebrated artists, Edgar Degas, opens at The Burrell Collection on Friday 24 May.

'Discovering Degas: Collecting in the time of Sir William Burrell' will bring together all 23 Degas works from Burrell's original collection alongside 28 world-class paintings, works on paper and sculptures on loan from 13 of the UK and Europe's leading national and international collections.

Glasgow Life colleagues can visit one of the must-see shows of the summer for just £5, which combined with your 25% discount in our museum shop represents a great deal for a day out. To take advantage of this special price simply turn up on the day with your ID badge or pay slip. Regular adult tickets are priced £13.50 and children under 12 are free.

Glasgow Life's new behaviours framework

Our new **Behaviours Framework** has been created with input from colleagues across our charity. They reflect the way we live our values every day, from our attitudes and the approach we take to our work to how we treat our colleagues and customers and expect to be treated.

This year, behaviours will replace competencies in our Performance Management discussions. Your line manager will discuss this with you and share some training tools to help you use them day-to-day.

Our behaviours will play an important role in continuing to shape the culture of our charity. You can read more about our new behaviours on our intranet.



A Song for Glasgow

We're looking for 'A Song for Glasgow', one that's catchy and reflective of our great city's dynamic energy. The prize is the chance to write, record and perform a song for the city. To enter, visit glasgowlife.org.uk/a-song-for-glasgow. The closing date for entries is Sunday 19 May.



Our Glasgow Life Behaviours

If you have any questions about topics covered here, please speak to your line manager