

Baillieston Community Hub public engagement

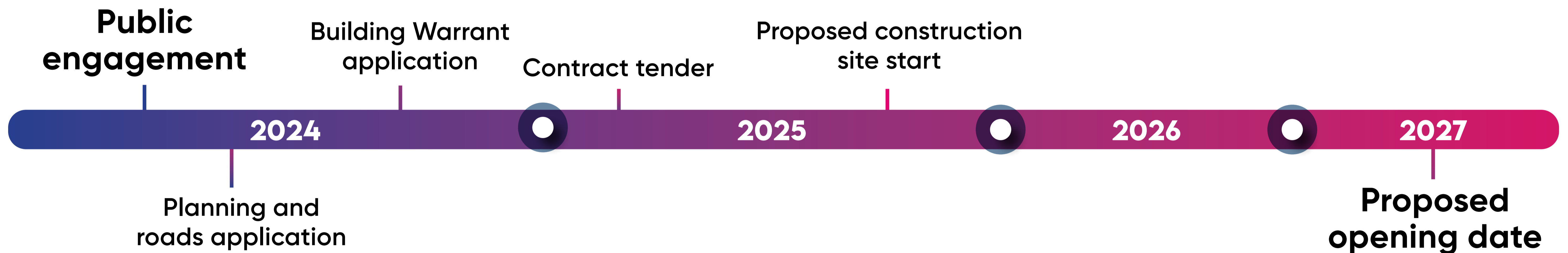
The proposed new Baillieston Community Hub is one of the largest projects to impact the east of the city in recent years and highlights the city's commitment to the health and well-being of its citizens. It will ensure the expansion in residential development within Baillieston, Broomhouse and Carmyle is complemented by modern, accessible facilities that encourage residents and visitors to experience life affirming activities in a family friendly environment.

Located within James Lindsay Memorial Park, the aim of the new £14.6 million Hub is to create a focal point where people can meet, participate, learn and relax within an enhanced parkland setting. This will be made possible by the construction of light and airy modern facilities and the delivery of a programme of activities including relocated library/ learning services, health and fitness, and social and cultural events.

Come along to ask questions and find out more at the following staffed information sessions:

- Monday 16 September 2024 10am-5pm
- Thursday 19 September 2024 2pm-8pm
- Saturday 21 September 2024 10am-5pm

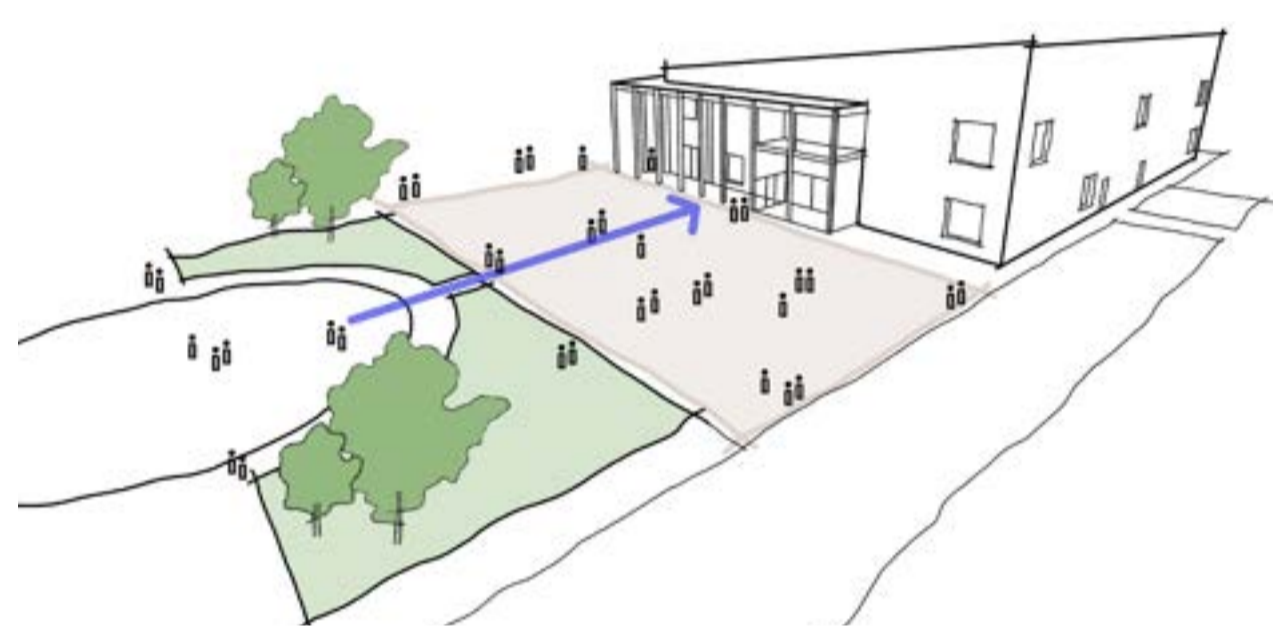
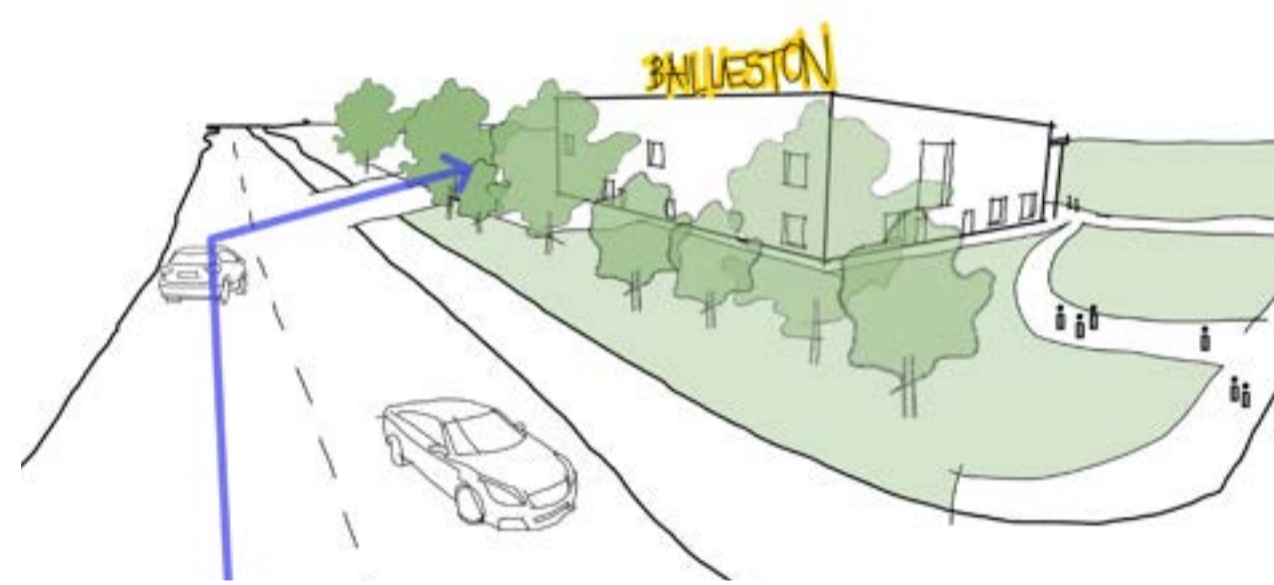
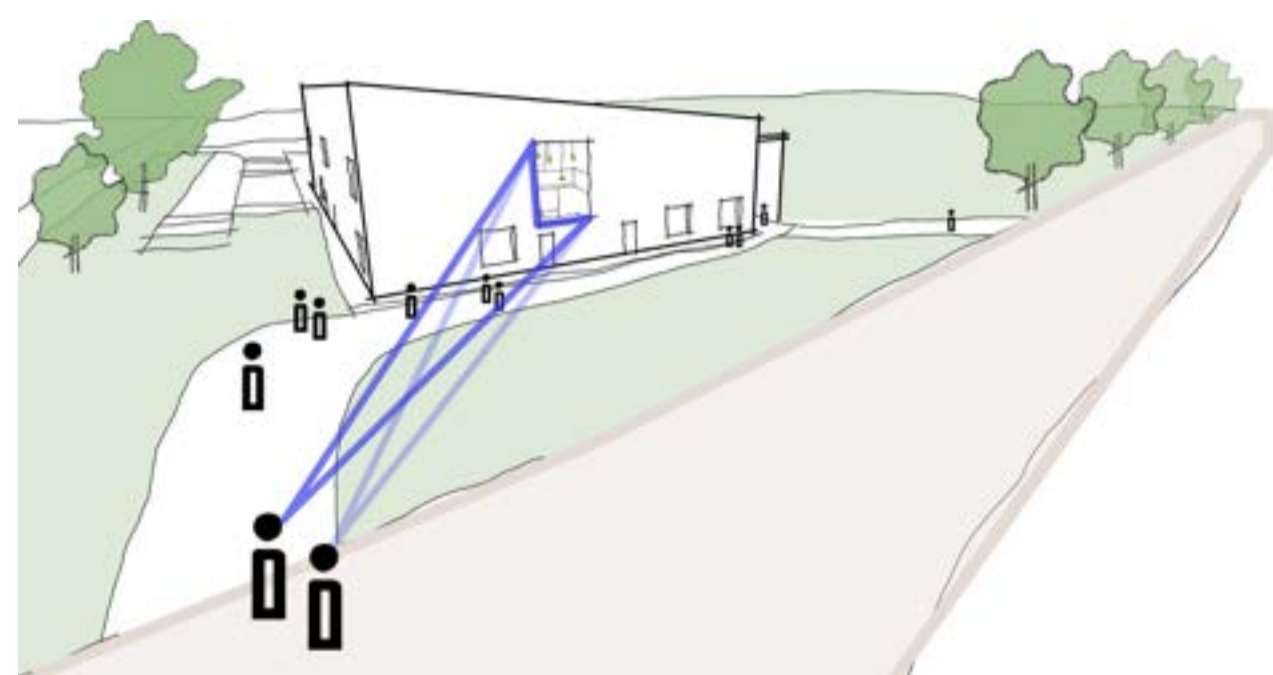
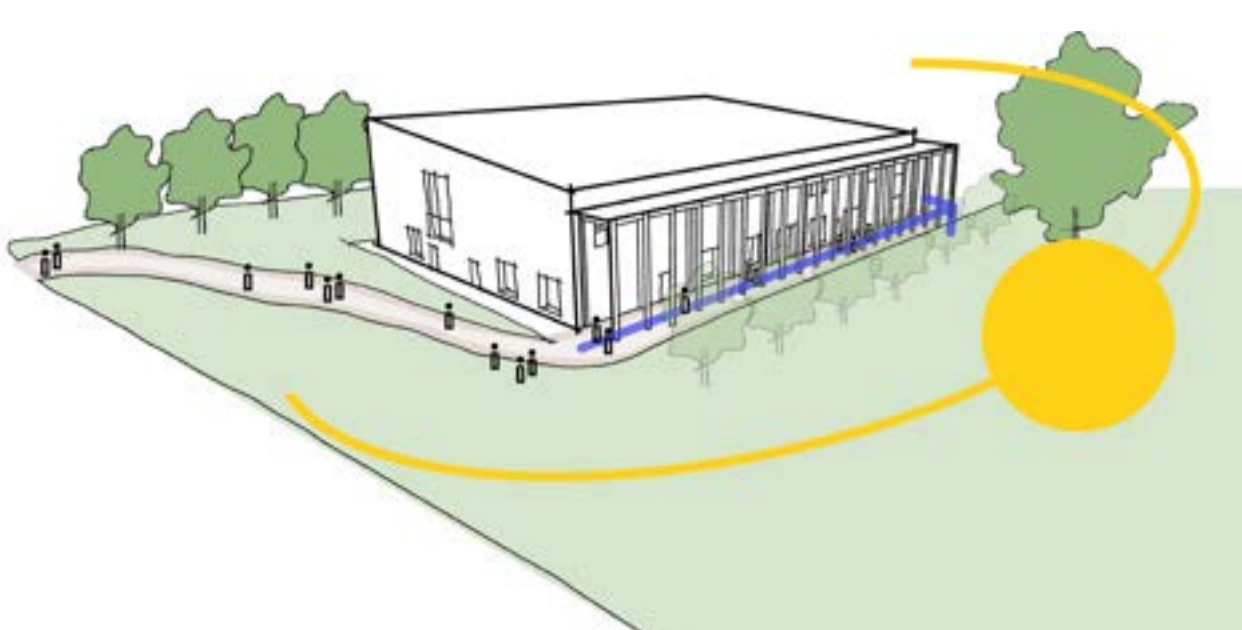
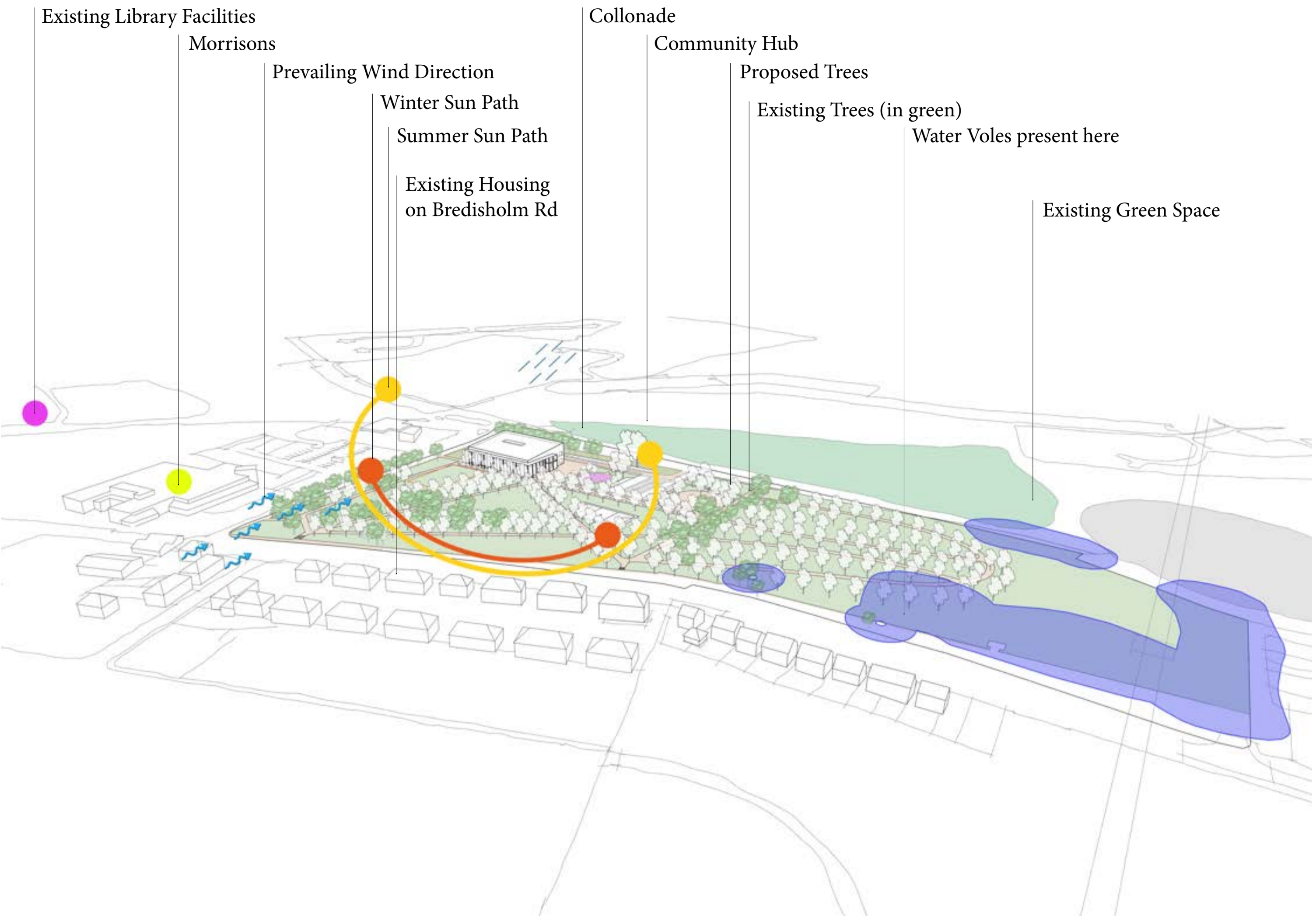
If you can't attend any of these sessions, you can also review and provide feedback online using the details below.



For further details, please visit glasgowlife.org.uk/libraries/venues/baillieston-library, or scan the QR code to leave your comment.



EXTERNAL PERSPECTIVES

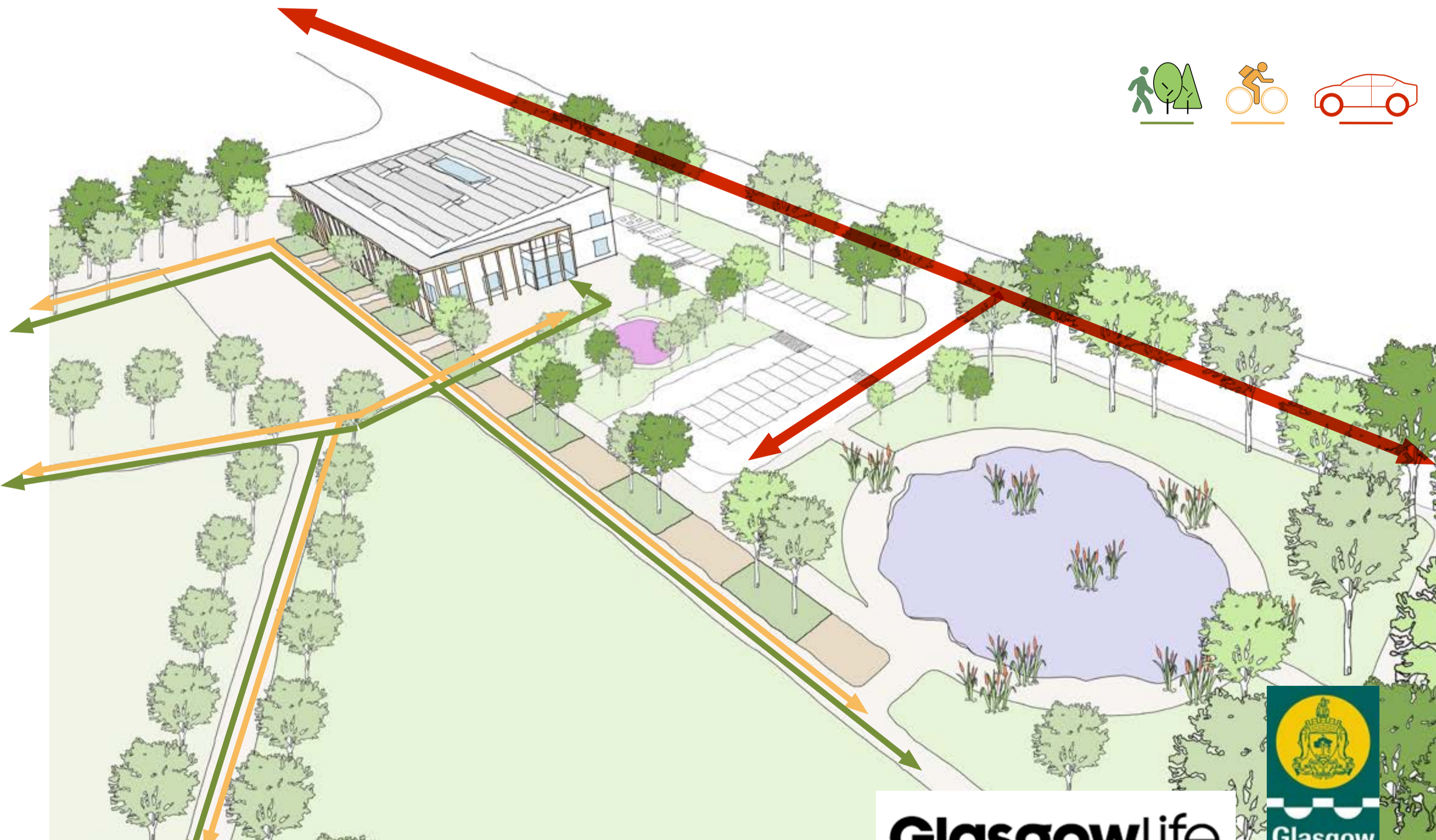


The Wider Baillieston Site

Design Concept Sketches



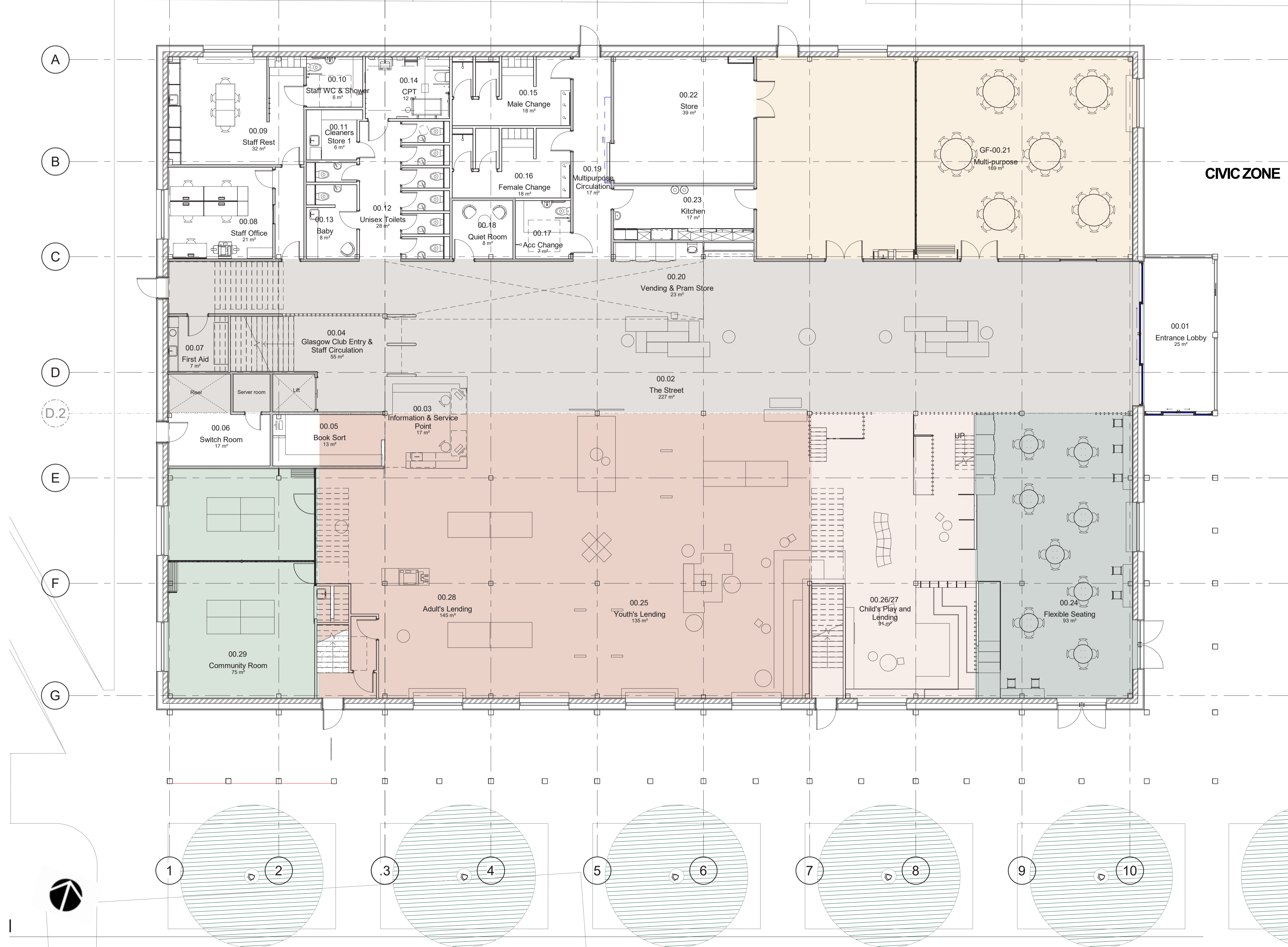
Approach to the Building through the Park



Approach to the Building via Foot, Bike and Vehicle

GROUND FLOOR PLAN

- Child's Play within the Library
- Community Bookable Room
- Flexible Seating
- Library Space
- Multi-Purpose Hall
- 'The Street' Circulation Space



Child's Play within the Library



Community Bookable Room

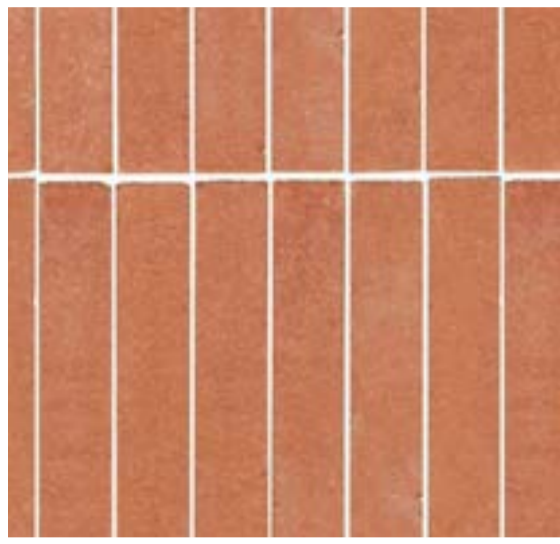
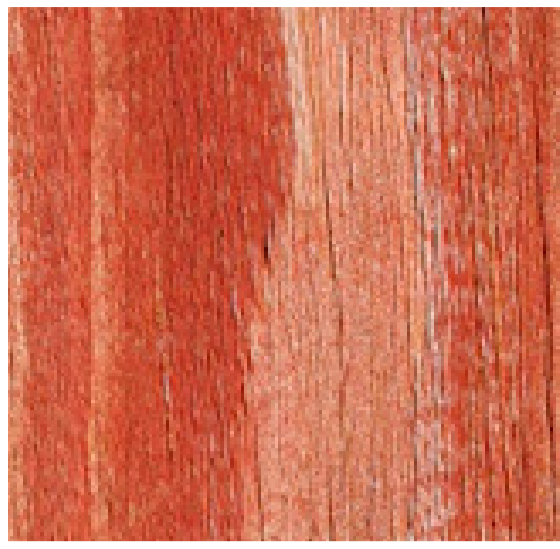


Flexible Seating

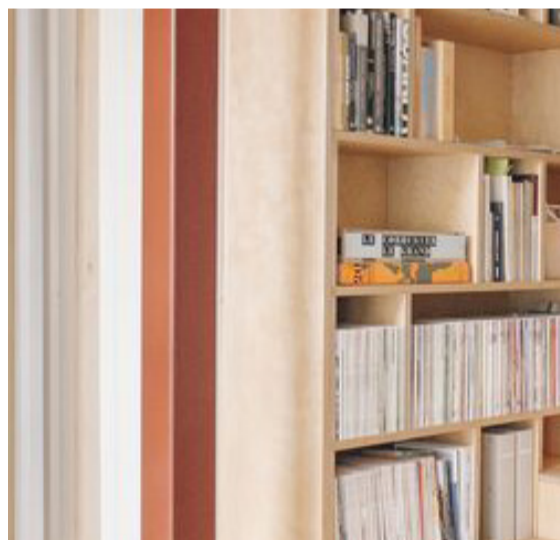


Library Space

INTERNAL PERSPECTIVES



Multi-Purpose Hall

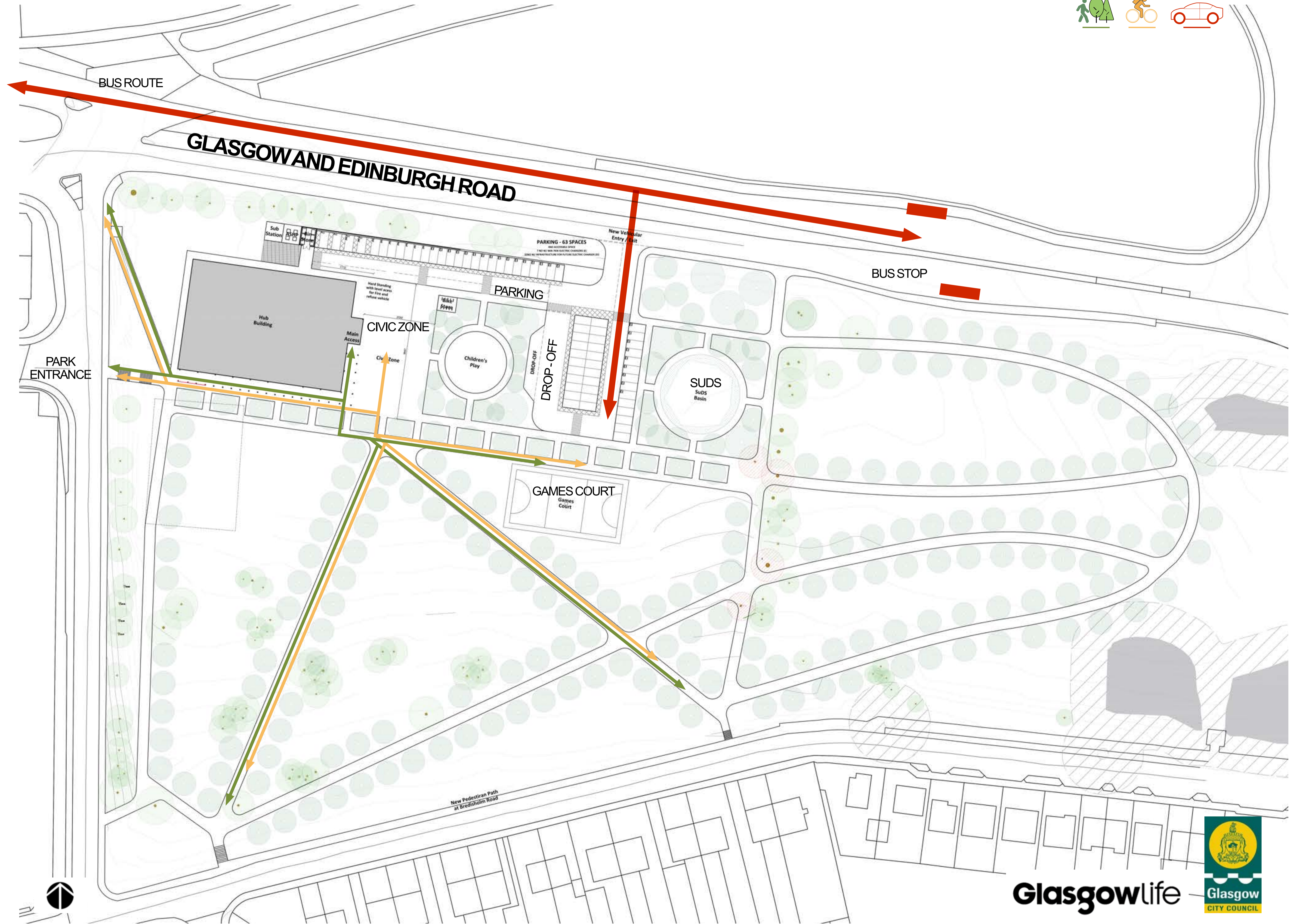
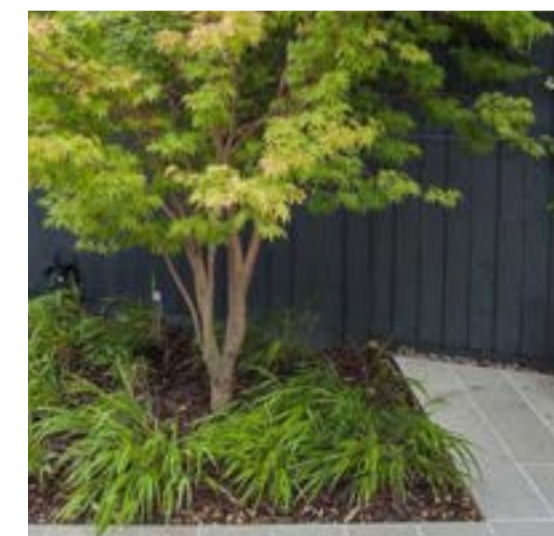
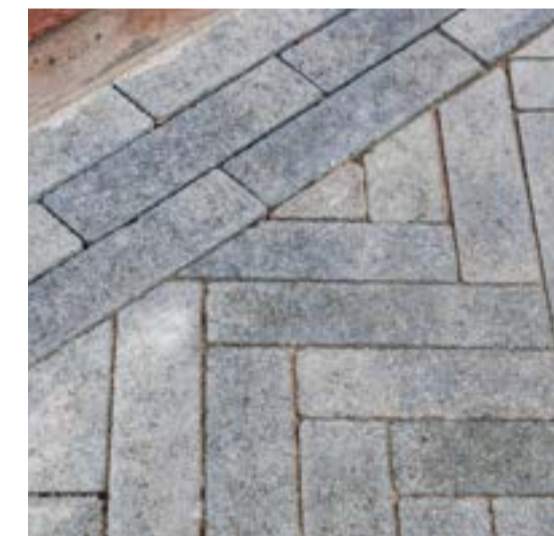


'The Street' Circulation Space

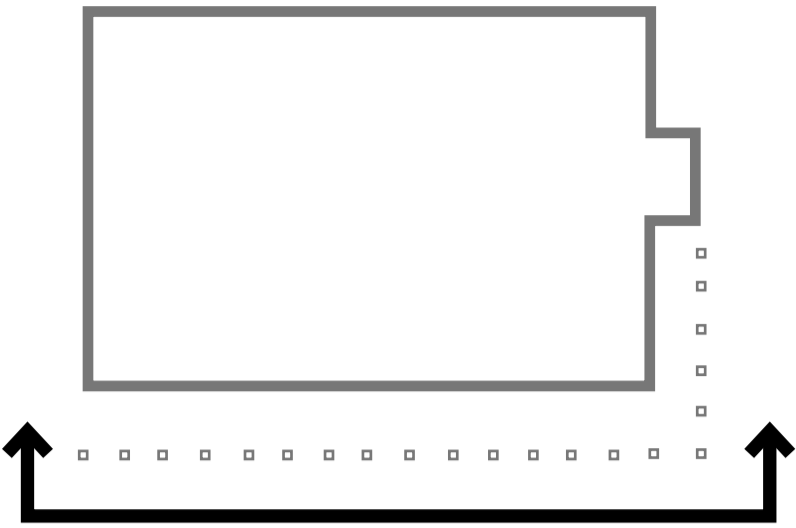
Glasgowlife



SITE PLAN



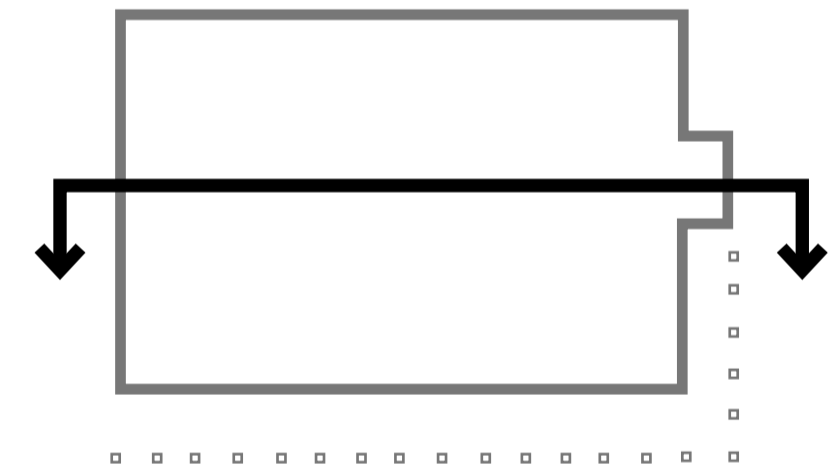
ELEVATIONS AND SECTIONS



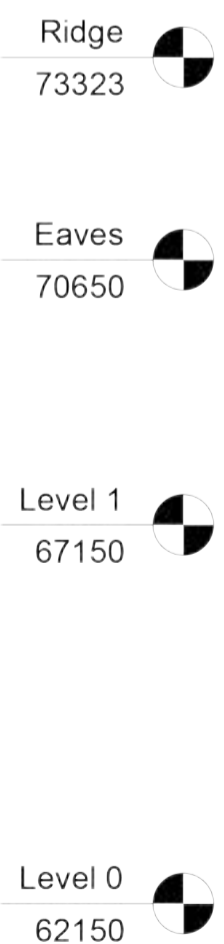
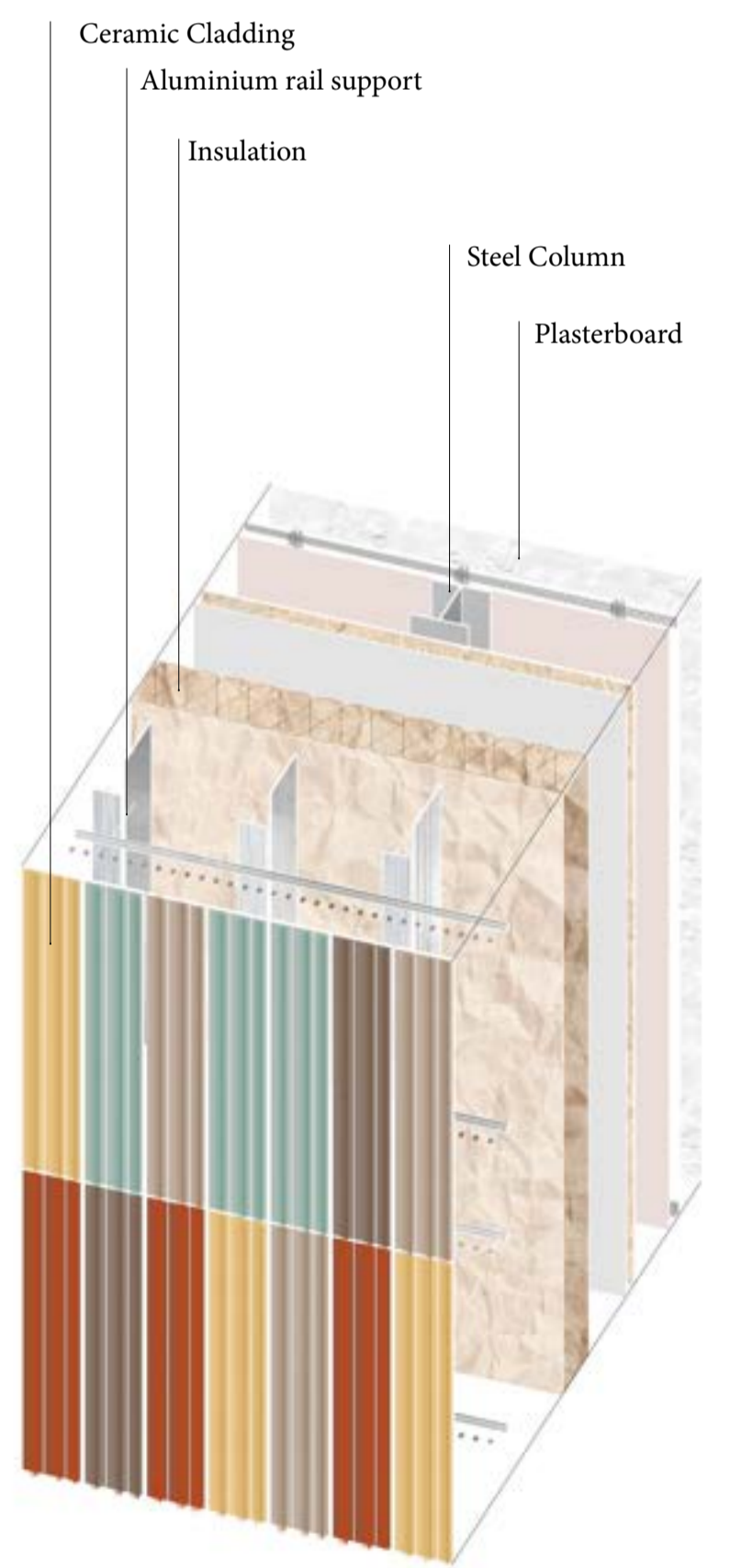
Precedents



East Elevation



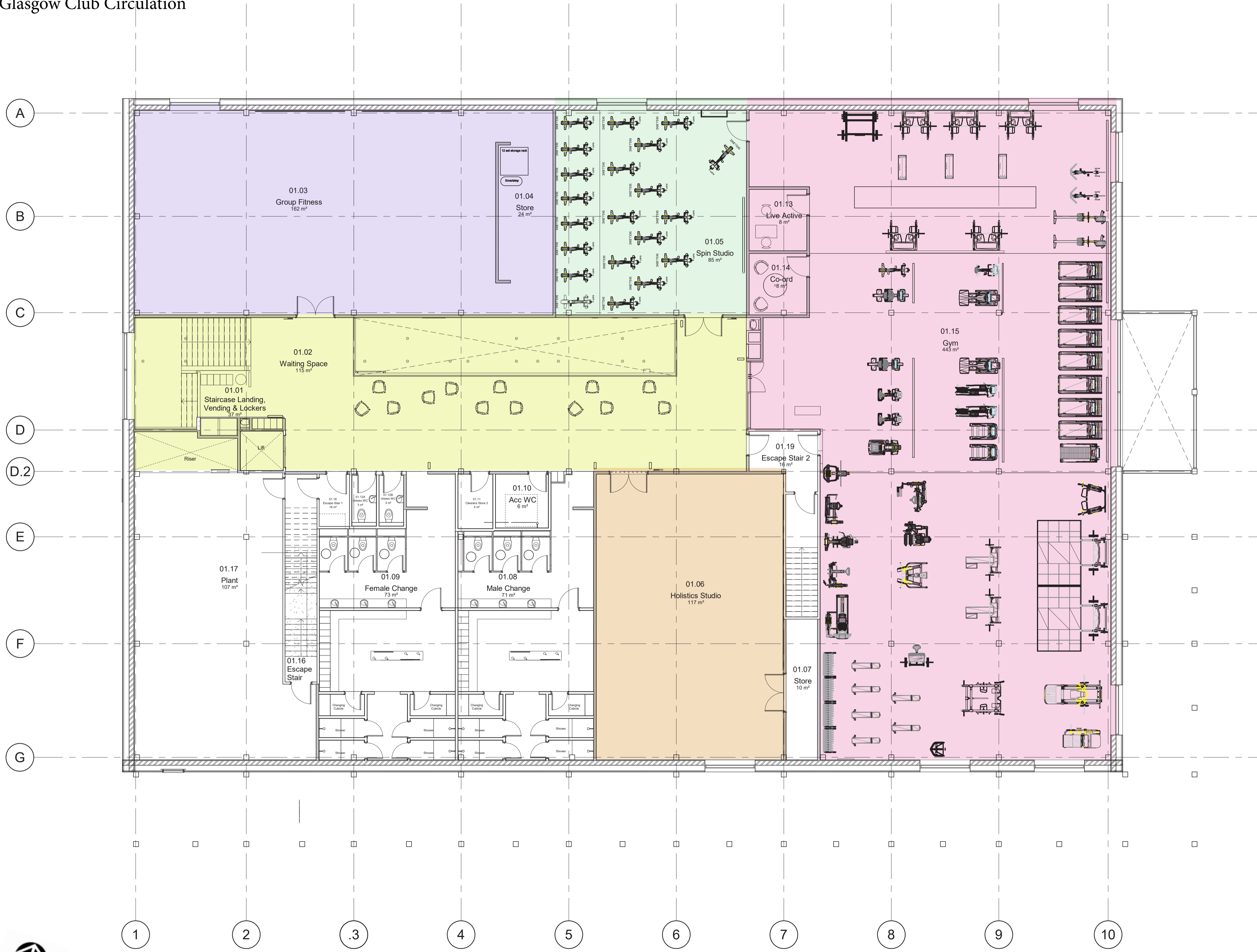
Section from East to West looking South



Wall Build-up

FIRST FLOOR PLAN

- Holistics Studio
- Group Fitness
- Spin Studio
- Gym
- Glasgow Club Circulation



Holistics Studio



Group Fitness



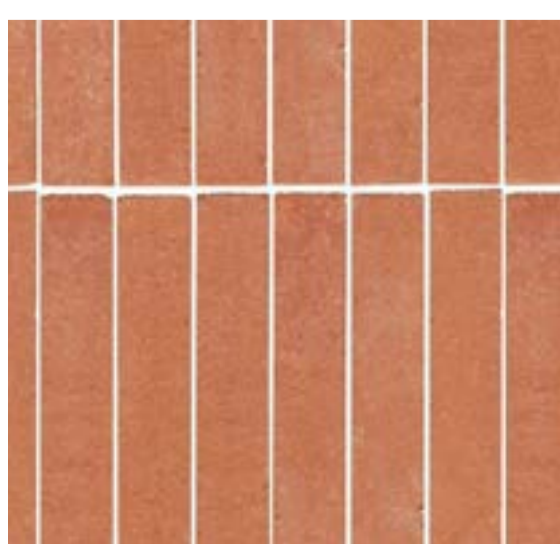
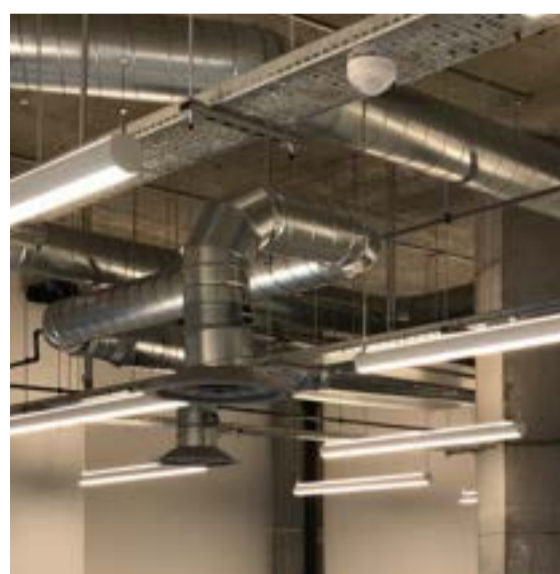
Spin Studio



INTERNAL PERSPECTIVES



Glasgow Club Circulation



Gym

Glasgowlife

